

Mobile PCR Testing Laboratory

YJF-12X1H



Scope of Application

Applicable to hospitals, third-party testing companies, ports, CDC; In addition to the on-site detection of pathogenic nucleic acid, the lab can also be used for emergency biological detection, providing a mobile, fast, safe, accurate and efficient technical inspection platform for emergencies and public health events.

Innovative Design

- ◎ Solid & Durable
- ◎ Safe, Reliable & Secure
- ◎ Intelligent Integrated Design
- ◎ Environmental Reliability
- ◎ Small Shelter Footprint, Transportable, Rapid Deployment

Алматы (7273)495-231
Ангарск (3955)60-70-56
Архангельск (8182)63-90-72
Астрахань (8512)99-46-04
Барнаул (3852)73-04-60
Белгород (4722)40-23-64
Благовещенск (4162)22-76-07
Брянск (4832)59-03-52
Владивосток (423)249-28-31
Владикавказ (8672)28-90-48
Владимир (4922)49-43-18
Волгоград (844)278-03-48
Вологда (8172)26-41-59
Воронеж (473)204-51-73
Екатеринбург (343)384-55-89

Иваново (4932)77-34-06
Ижевск (3412)26-03-58
Иркутск (395)279-98-46
Казань (843)206-01-48
Калининград (4012)72-03-81
Калуга (4842)92-23-67
Кемерово (3842)65-04-62
Киров (8332)68-02-04
Коломна (4966)23-41-49
Кострома (4942)77-07-48
Краснодар (861)203-40-90
Красноярск (391)204-63-61
Курск (4712)77-13-04
Курган (3522)50-90-47
Липецк (4742)52-20-81

Магнитогорск (3519)55-03-13
Москва (495)268-04-70
Мурманск (8152)59-64-93
Набережные Челны (8552)20-53-41
Нижний Новгород (831)429-08-12
Новокузнецк (3843)20-46-81
Ноябрьск (3496)41-32-12
Новосибирск (383)227-86-73
Омск (3812)21-46-40
Орел (4862)44-53-42
Оренбург (3532)37-68-04
Пенза (8412)22-31-16
Петрозаводск (8142)55-98-37
Псков (8112)59-10-37
Пермь (342)205-81-47

Ростов-на-Дону (863)308-18-15
Рязань (4912)46-61-64
Самара (846)206-03-16
Санкт-Петербург (812)309-46-40
Саратов (845)249-38-78
Севастополь (8692)22-31-93
Саранск (8342)22-96-24
Симферополь (3652)67-13-56
Смоленск (4812)29-41-54
Сочи (862)225-72-31
Ставрополь (8652)20-65-13
Сургут (3462)77-98-35
Сыктывкар (8212)25-95-17
Тамбов (4752)50-40-97
Тверь (4822)63-31-35

Тольятти (8482)63-91-07
Томск (3822)98-41-53
Тула (4872)33-79-87
Тюмень (3452)66-21-18
Ульяновск (8422)24-23-59
Улан-Удэ (3012)59-97-51
Уфа (347)229-48-12
Хабаровск (4212)92-98-04
Чебоксары (8352)28-53-07
Челябинск (351)202-03-61
Череповец (8202)49-02-64
Чита (3022)38-34-83
Якутск (4112)23-90-97
Ярославль (4852)69-52-93

Россия +7(495)268-04-70

Казахстан +7(7172)727-132

Киргизия +996(312)96-26-47

Product Advantages

Solid and durable cabin

High strength, corrosion resistance, tight sealing, and excellent thermal insulation

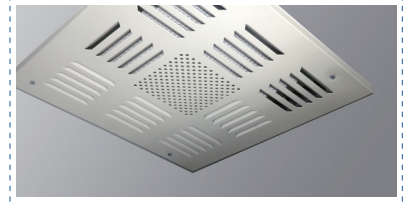


Superior materials of high safety

All parts of the cabin, including the partitions, ceilings, doors, windows, lamps, water pipes, and electrical components, are made of high-quality materials

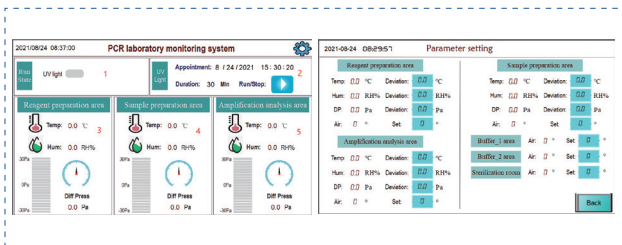


Sophisticated ventilation facilities and rain protection measures



Intelligent control system (IoT System)

Equipped with the Internet of things technology (IoT) and a touch screen to monitor device status and set device parameters



Non-hazardous treatment of wastewater (ozone sterilizer)

Equipped with a special water storage tank to enable circulating water supply and a wastewater collecting tank to discharge wastewater upon ozone sterilization with the SIP (Sterilizing in Place) technology.



Product Features



BSL-2 Biosafety Laboratory design

ISO 8 cleanliness, and more than 12 air changes per hour.



3+2 Zone Division

3 core functional zones + 2 auxiliary functional zones.



Clear Logistics Channels

Separate channels are provided for personnel, specimens, and contaminants.



≥10 Long Service Life

The service life of the cabin is ≥10 years.



Airflow Design

Unidirectional airflow from the reagent preparation room to the amplification analysis room, with an adjustable pressure difference.



Third-party Testing Zone Division

After the construction of the cabin, a formal third-party testing institution is commissioned to test the relevant indicators inside the cabin and issue a test report with the official seal of the third party.

Алматы (7273)495-231
 Ангарск (3955)60-70-56
 Архангельск (8182)63-90-72
 Астрахань (8512)99-46-04
 Барнаул (3852)73-04-60
 Белгород (4722)40-23-64
 Благовещенск (4162)22-76-07
 Брянск (4832)59-03-52
 Владивосток (423)249-28-31
 Владикавказ (8672)28-90-48
 Владимир (4922)49-43-18
 Волгоград (844)278-03-48
 Вологда (8172)26-41-59
 Воронеж (473)204-51-73
 Екатеринбург (343)384-55-89

Иваново (4932)77-34-06
 Ижевск (3412)26-03-58
 Иркутск (395)279-98-46
 Казань (843)206-01-48
 Калининград (4012)72-03-81
 Калуга (4842)92-23-67
 Кемерово (3842)65-04-62
 Киров (8332)68-02-04
 Коломна (4966)23-41-49
 Кострома (4942)77-07-48
 Краснодар (861)203-40-90
 Красноярск (391)204-63-61
 Курск (4712)77-13-04
 Курган (3522)50-90-47
 Липецк (4742)52-20-81

Магнитогорск (3519)55-03-13
 Москва (495)268-04-70
 Мурманск (8152)59-64-93
 Набережные Челны (8552)20-53-41
 Нижний Новгород (831)429-08-12
 Новокузнецк (3843)20-46-81
 Ноябрьск (3496)41-32-12
 Новосибирск (383)227-86-73
 Омск (3812)21-46-40
 Орел (4862)44-53-42
 Оренбург (3532)37-68-04
 Пенза (8412)22-31-16
 Петрозаводск (8142)55-98-37
 Псков (8112)59-10-37
 Пермь (342)205-81-47

Ростов-на-Дону (863)308-18-15
 Рязань (4912)46-61-64
 Самара (846)206-03-16
 Санкт-Петербург (812)309-46-40
 Саратов (845)249-38-78
 Севастополь (8692)22-31-93
 Саранск (8342)22-96-24
 Симферополь (3652)67-13-56
 Смоленск (4812)29-41-54
 Сочи (862)225-72-31
 Ставрополь (8652)20-65-13
 Сургут (3462)77-98-35
 Сыктывкар (8212)25-95-17
 Тамбов (4752)50-40-97
 Тверь (4822)63-31-35

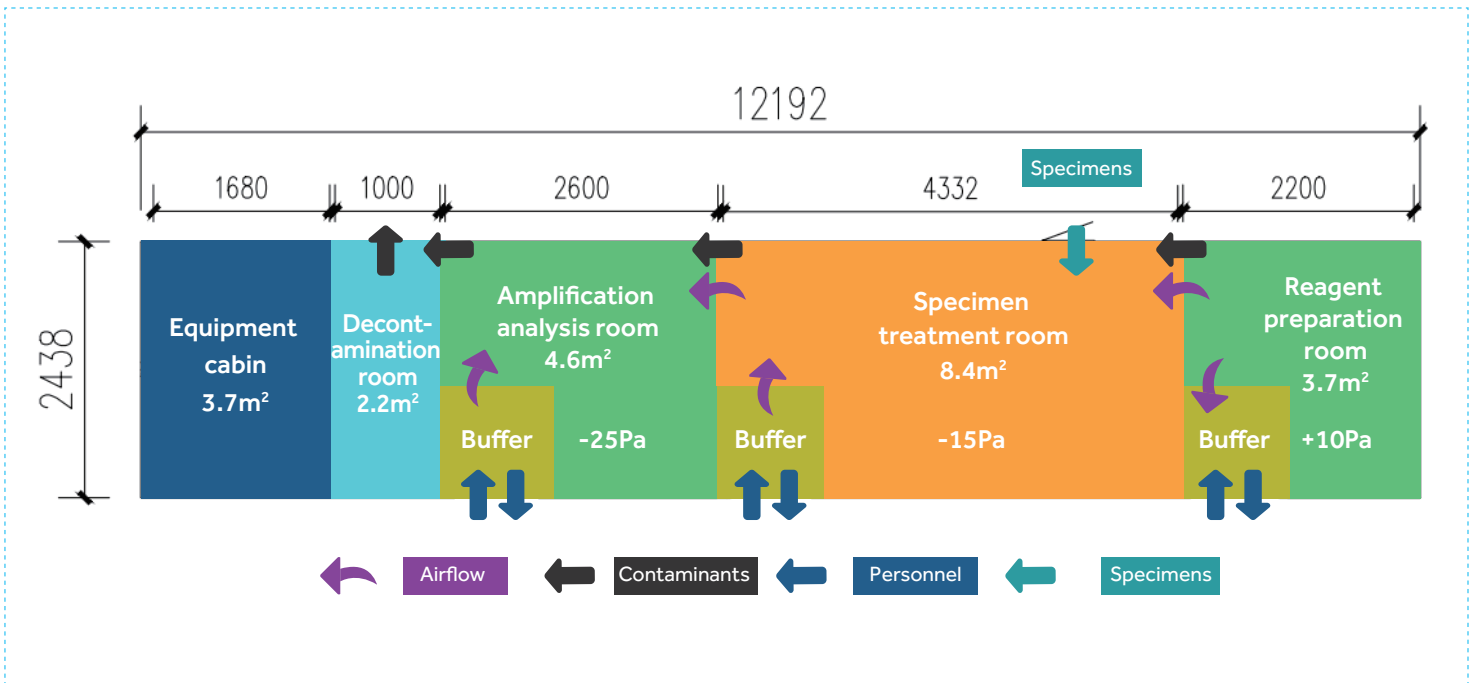
Тольятти (8482)63-91-07
 Томск (3822)98-41-53
 Тула (4872)33-79-87
 Тюмень (3452)66-21-18
 Ульяновск (8422)24-23-59
 Улан-Удэ (3012)59-97-51
 Уфа (347)229-48-12
 Хабаровск (4212)92-98-04
 Томск (3822)98-41-53
 Чебоксары (8352)28-53-07
 Челябинск (351)202-03-61
 Череповец (8202)49-02-64
 Чита (3022)38-34-83
 Якутск (4112)23-90-97
 Ярославль (4852)69-52-93

Россия +7(495)268-04-70

Казахстан +7(7172)727-132

Киргизия +996(312)96-26-47

<https://haier.nt-rt.ru/> || hrg@nt-rt.ru



Product Parameters



| Product Model | Cabin Type | Exterior Dimensions (mm) | 24h Testing Capacity | Power Supply (V/Hz) | Clean Class |
|---------------|--------------|--------------------------|----------------------|---------------------|-------------|
| YJF-12X1H | Single cabin | 12192x2438x2896 | 3000 | 380/50 | ISO 8 |

Precautions for Transportation and Installation

- Transportation: The road width shall be no less than 5 meters, the height shall be higher than 4.5 meters. A 20-50t crane is required, and the road shall have a minimum turning radius of 22 meters.
- Foundation: It is a requirement that the foundation is level with hardened ground(20cm) or bearing columns (6 Pcs, 2.43*0.3*0.3m).
- Electrical: An external power port is reserved for connecting to 380V/50Hz AC.
- Water supply and drainage: The water supply connection is DN20 in size, while the drainage connection is DN50 in size; the water pipes shall be thermally insulated.